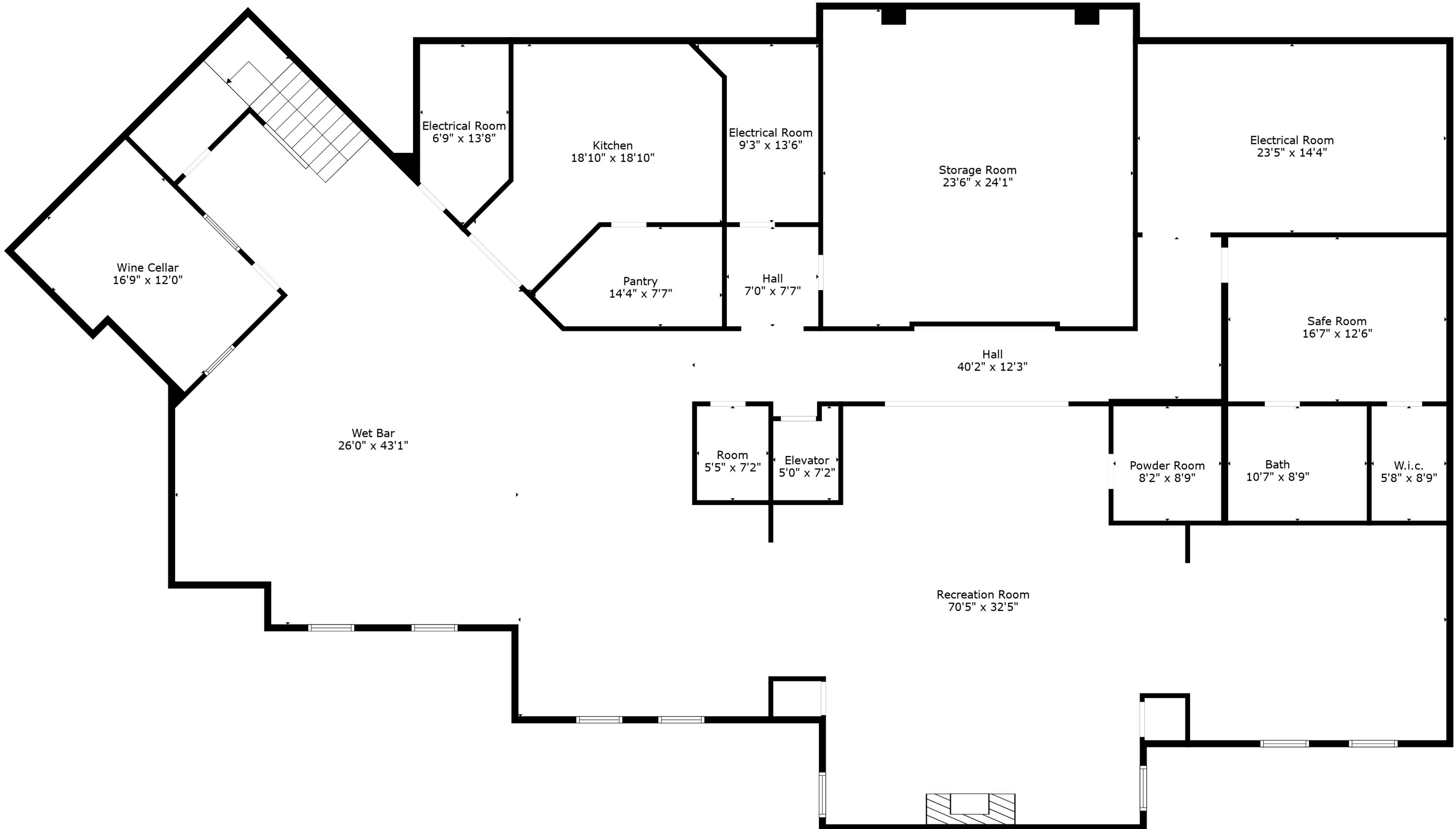
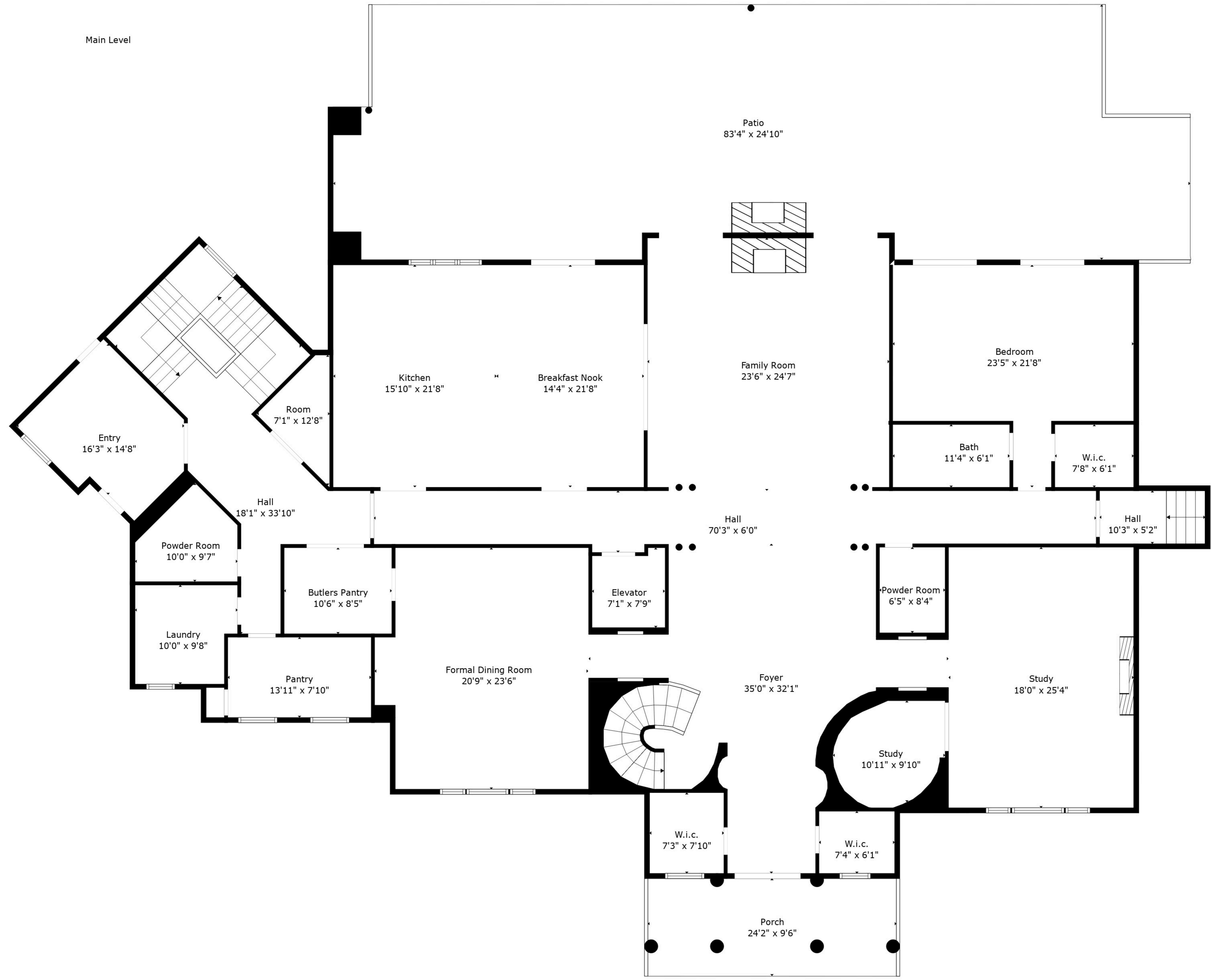


Basement



TOTAL: 19979 sq. ft

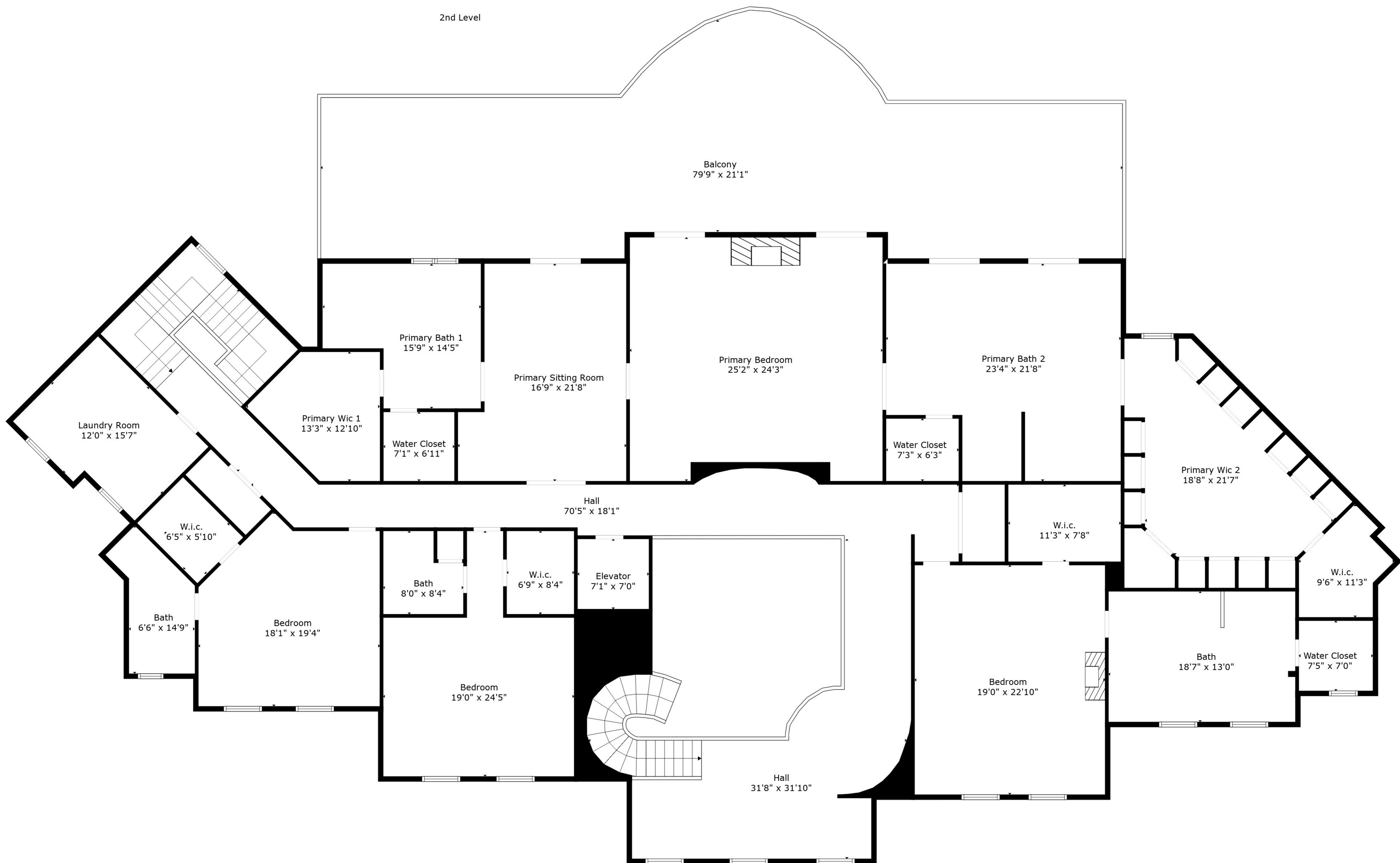
Below Ground: 4360 sq. ft, FLOOR 2: 1890 sq. ft, FLOOR 3: 5104 sq. ft, FLOOR 4: 3048 sq. ft, FLOOR 5: 5577 sq. ft
EXCLUDED AREAS: ELEVATOR: 134 sq. ft, ELECTRICAL ROOM: 516 sq. ft, WINE CELLAR: 188 sq. ft,
INDOOR POOL/SPA: 1280 sq. ft, GARAGE: 2033 sq. ft, PORCH: 230 sq. ft,
PATIO: 1876 sq. ft, LOW CEILING: 68 sq. ft, BALCONY: 2400 sq. ft,
OPEN TO BELOW: 343 sq. ft



TOTAL: 19979 sq. ft

Below Ground: 4360 sq. ft, FLOOR 2: 1890 sq. ft, FLOOR 3: 5104 sq. ft, FLOOR 4: 3048 sq. ft, FLOOR 5: 5577 sq. ft
 EXCLUDED AREAS: ELEVATOR: 134 sq. ft, ELECTRICAL ROOM: 516 sq. ft, WINE CELLAR: 188 sq. ft,
 INDOOR POOL/SPA: 1280 sq. ft, GARAGE: 2033 sq. ft, PORCH: 230 sq. ft,
 PATIO: 1876 sq. ft, LOW CEILING: 68 sq. ft, BALCONY: 2400 sq. ft,
 OPEN TO BELOW: 343 sq. ft

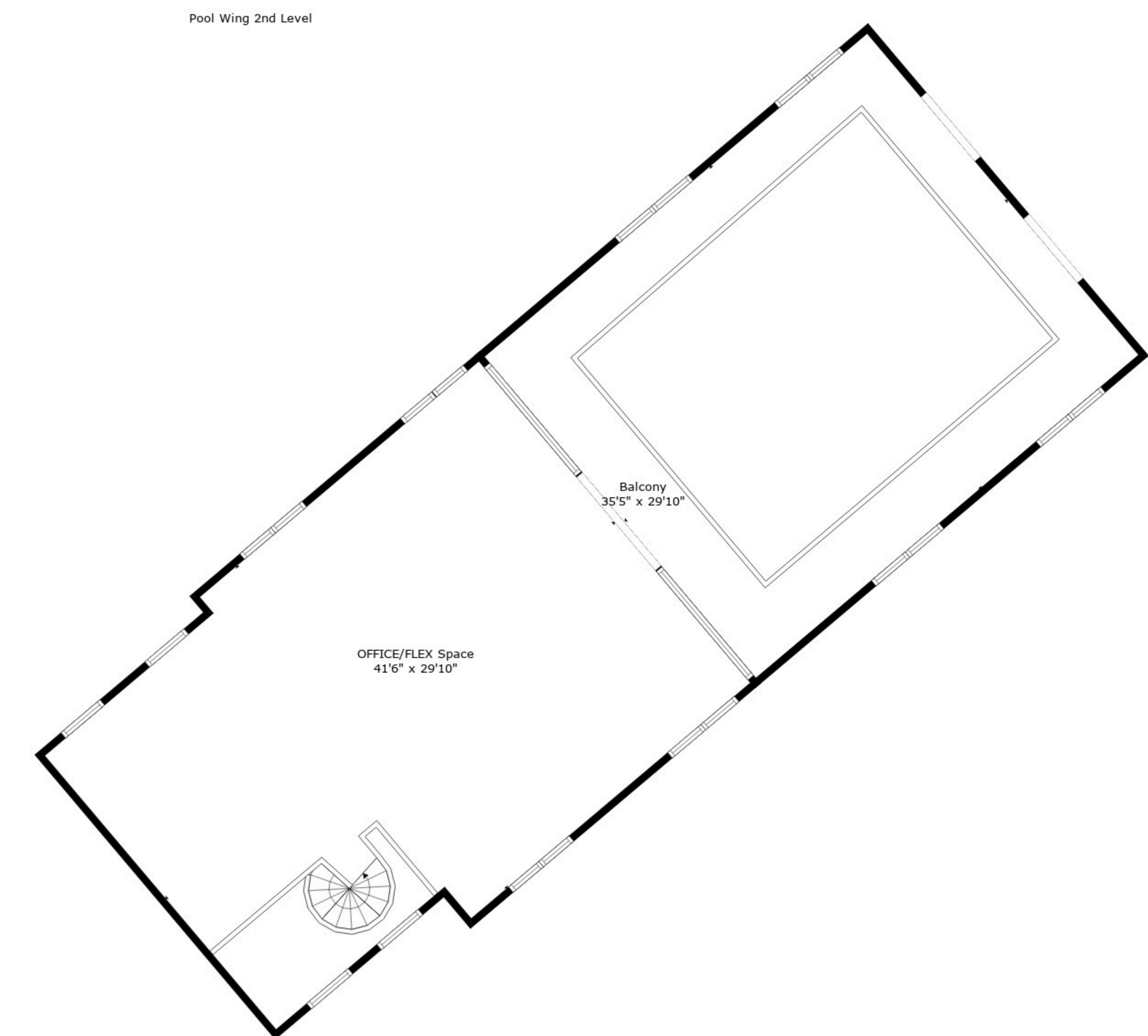
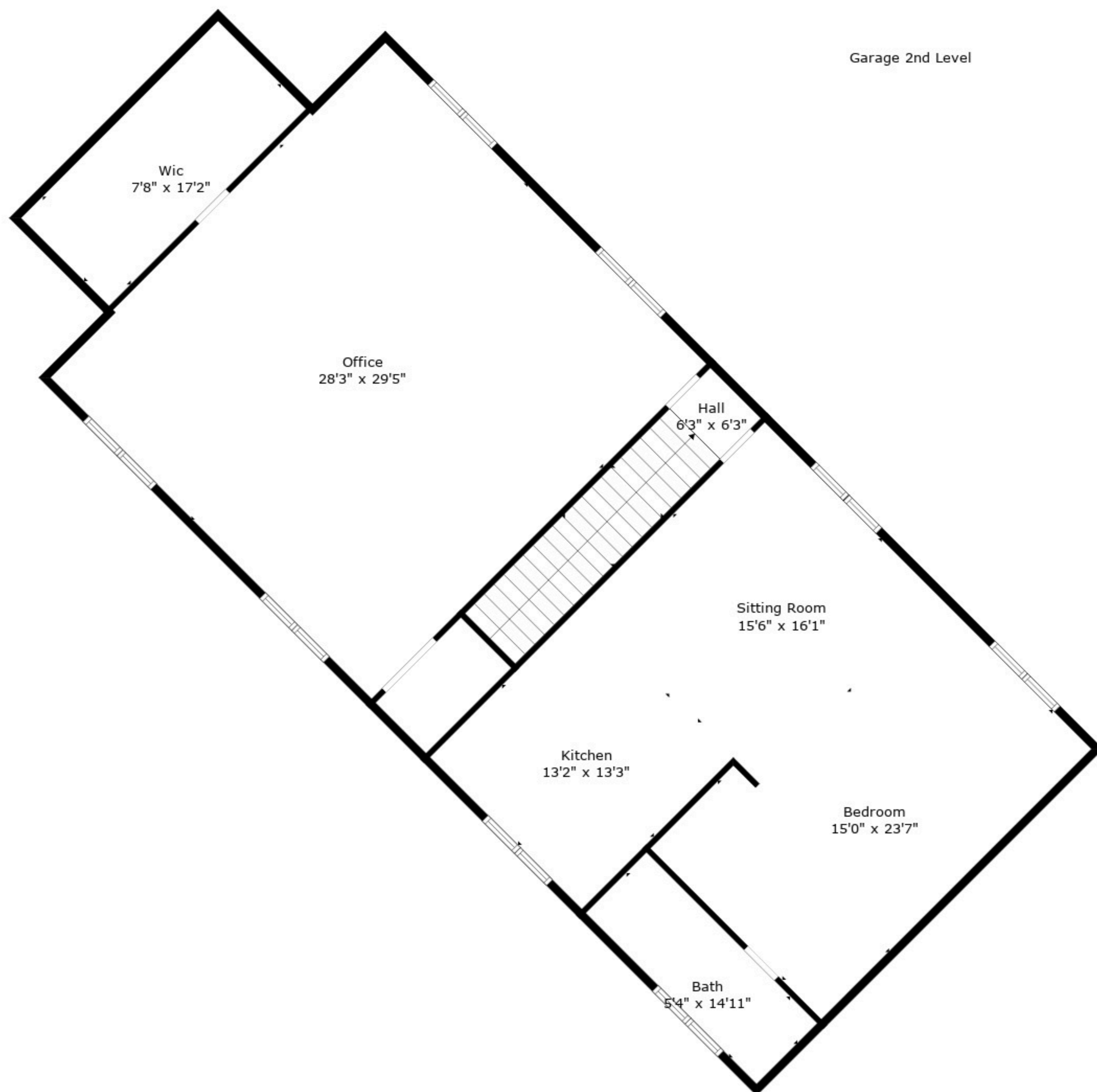
Measurements Are Calculated By Cubicasa Technology. Deemed Highly Reliable But Not Guaranteed.



TOTAL: 19979 sq. ft

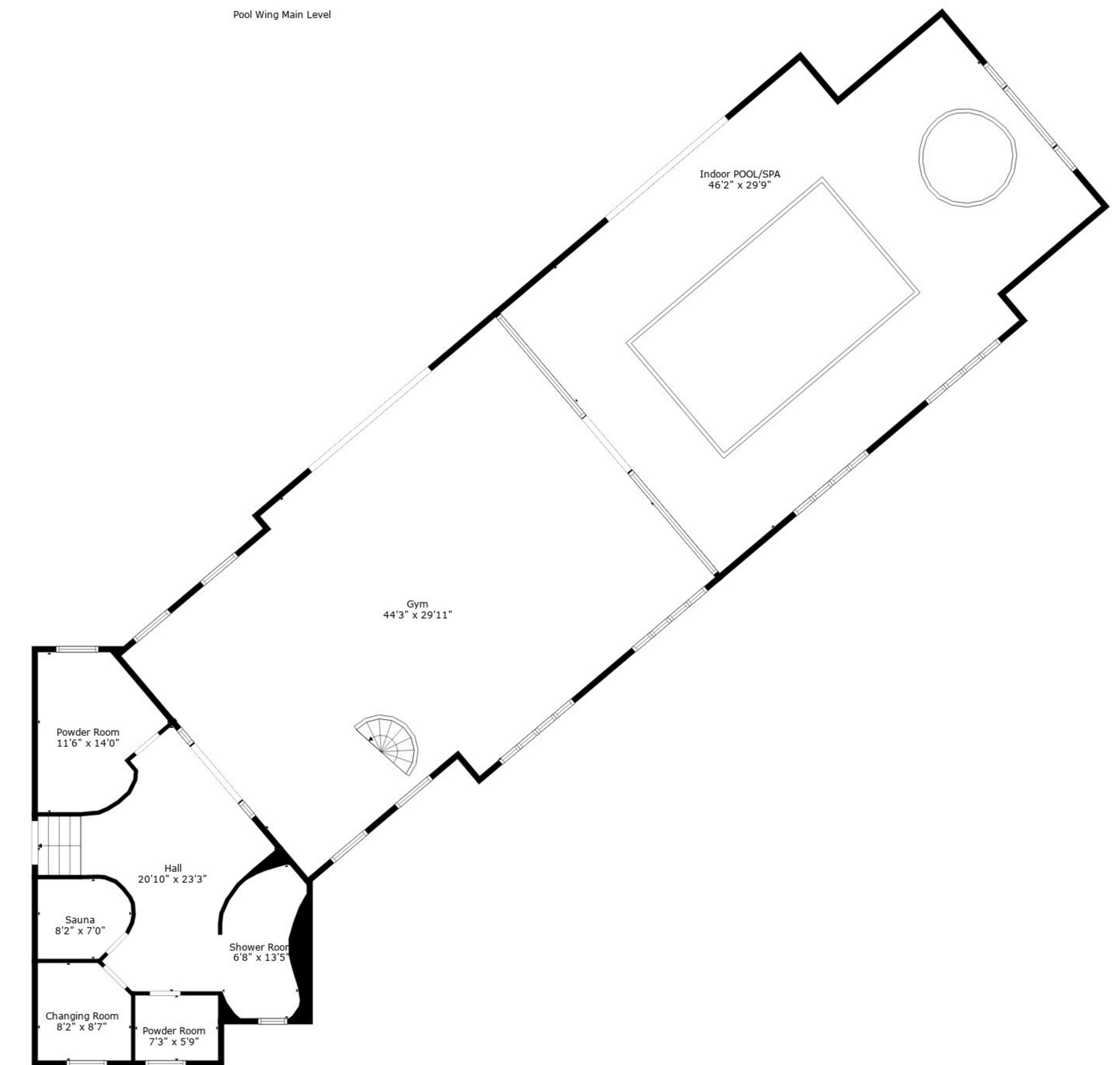
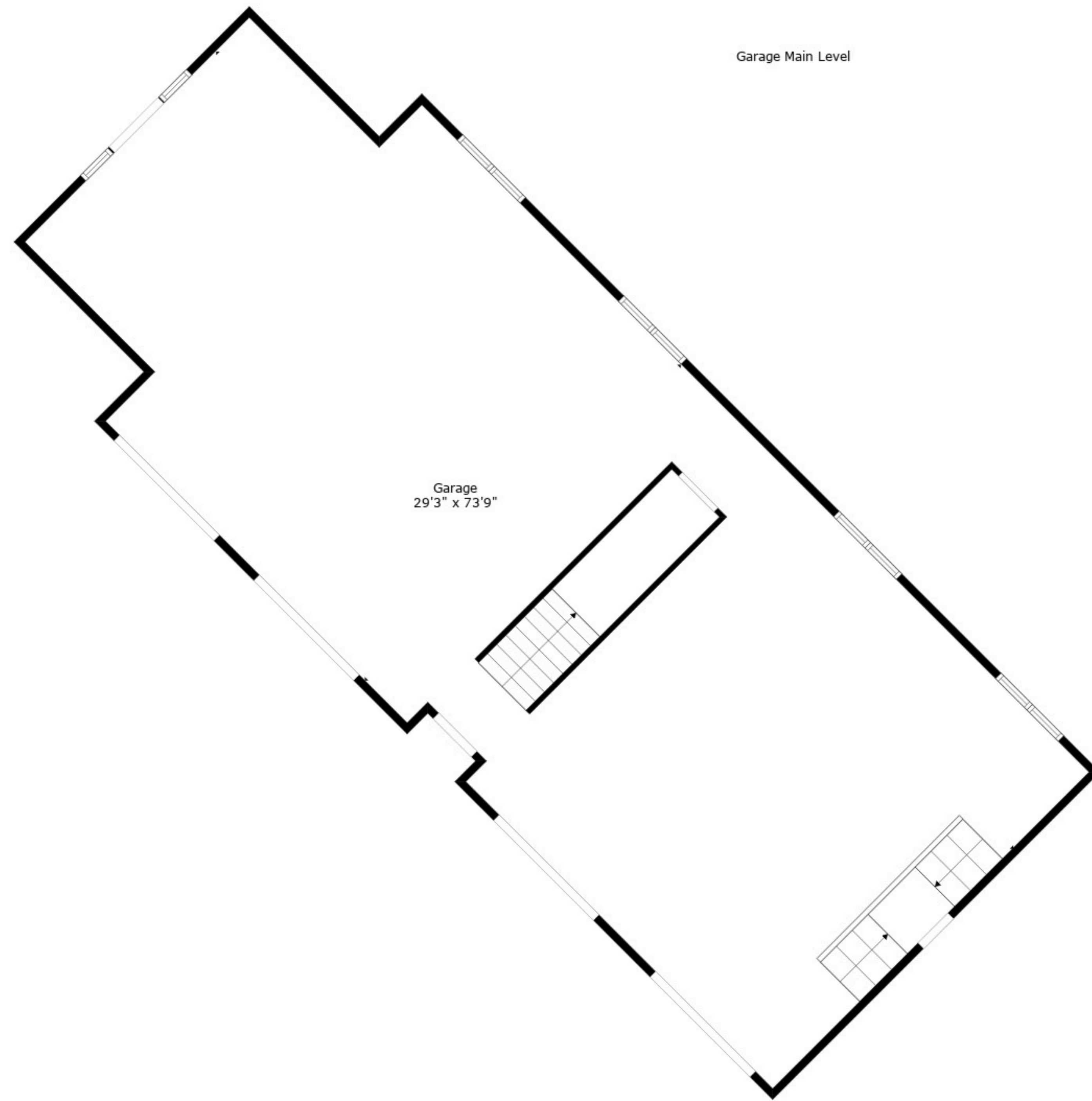
Below Ground: 4360 sq. ft, FLOOR 2: 1890 sq. ft, FLOOR 3: 5104 sq. ft, FLOOR 4: 3048 sq. ft, FLOOR 5: 5577 sq. ft
 EXCLUDED AREAS: ELEVATOR: 134 sq. ft, ELECTRICAL ROOM: 516 sq. ft, WINE CELLAR: 188 sq. ft,
 INDOOR POOL/SPA: 1280 sq. ft, GARAGE: 2033 sq. ft, PORCH: 230 sq. ft,
 PATIO: 1876 sq. ft, LOW CEILING: 68 sq. ft, BALCONY: 2400 sq. ft,
 OPEN TO BELOW: 343 sq. ft

Measurements Are Calculated By Cubicasa Technology. Deemed Highly Reliable But Not Guaranteed.



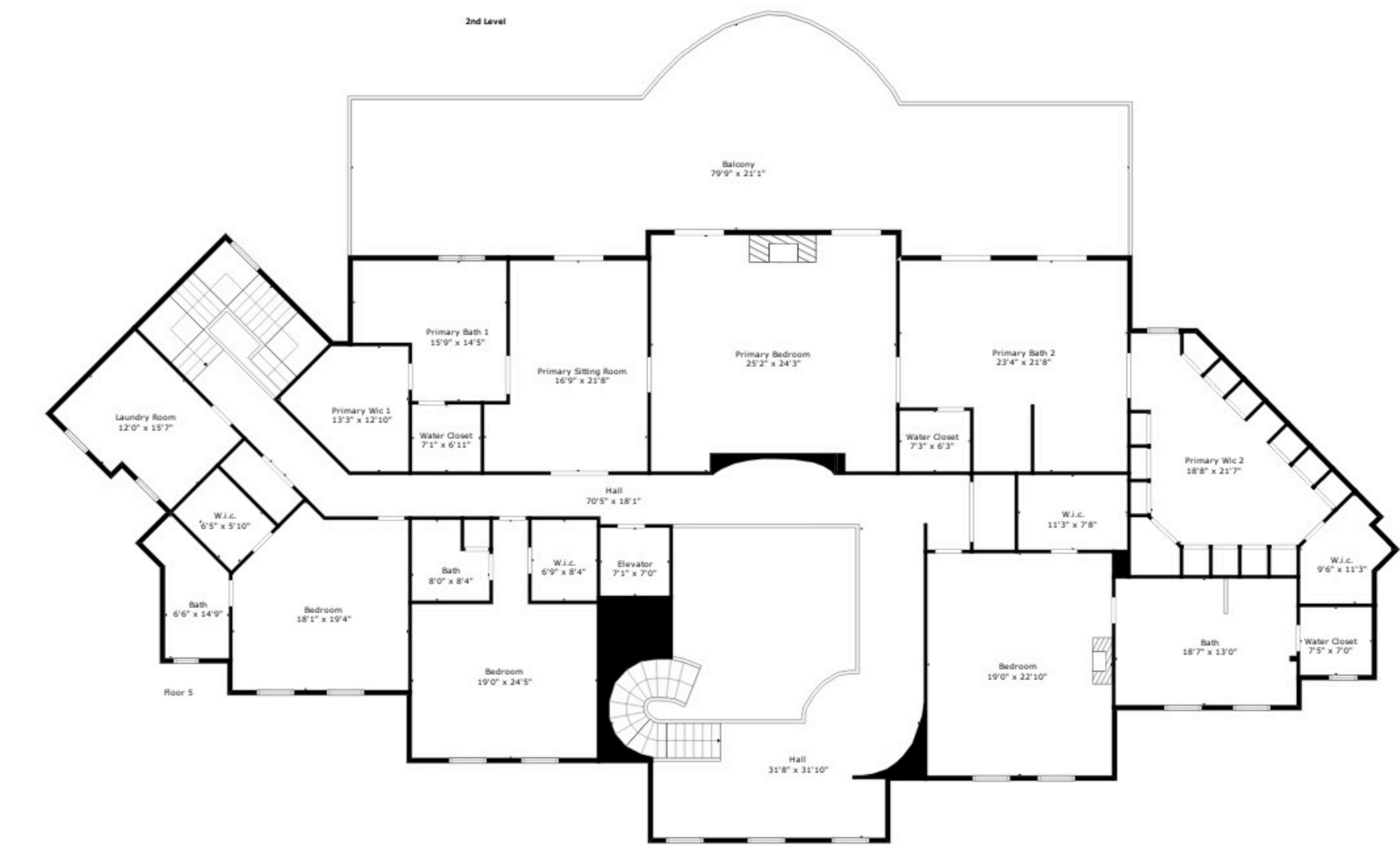
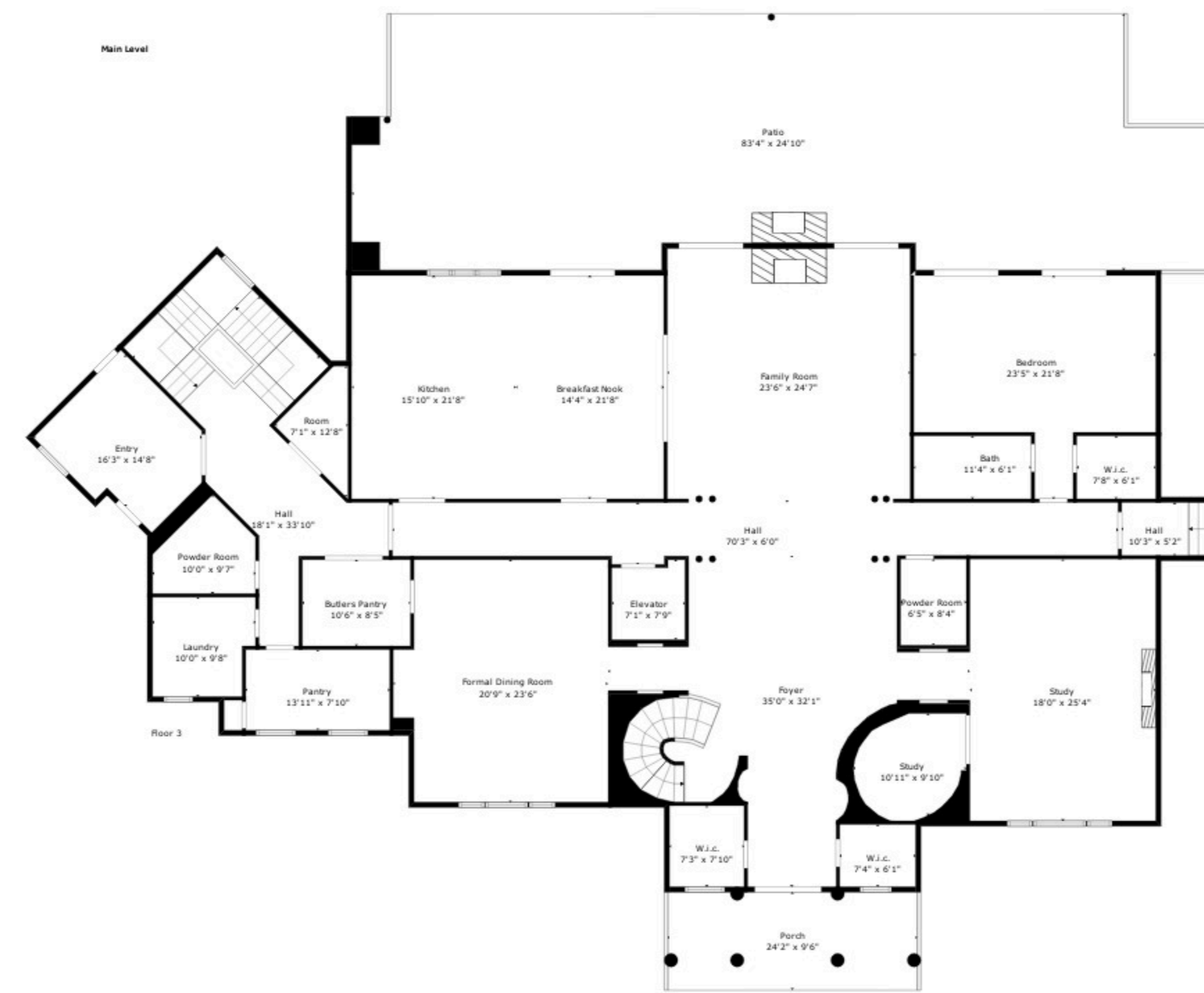
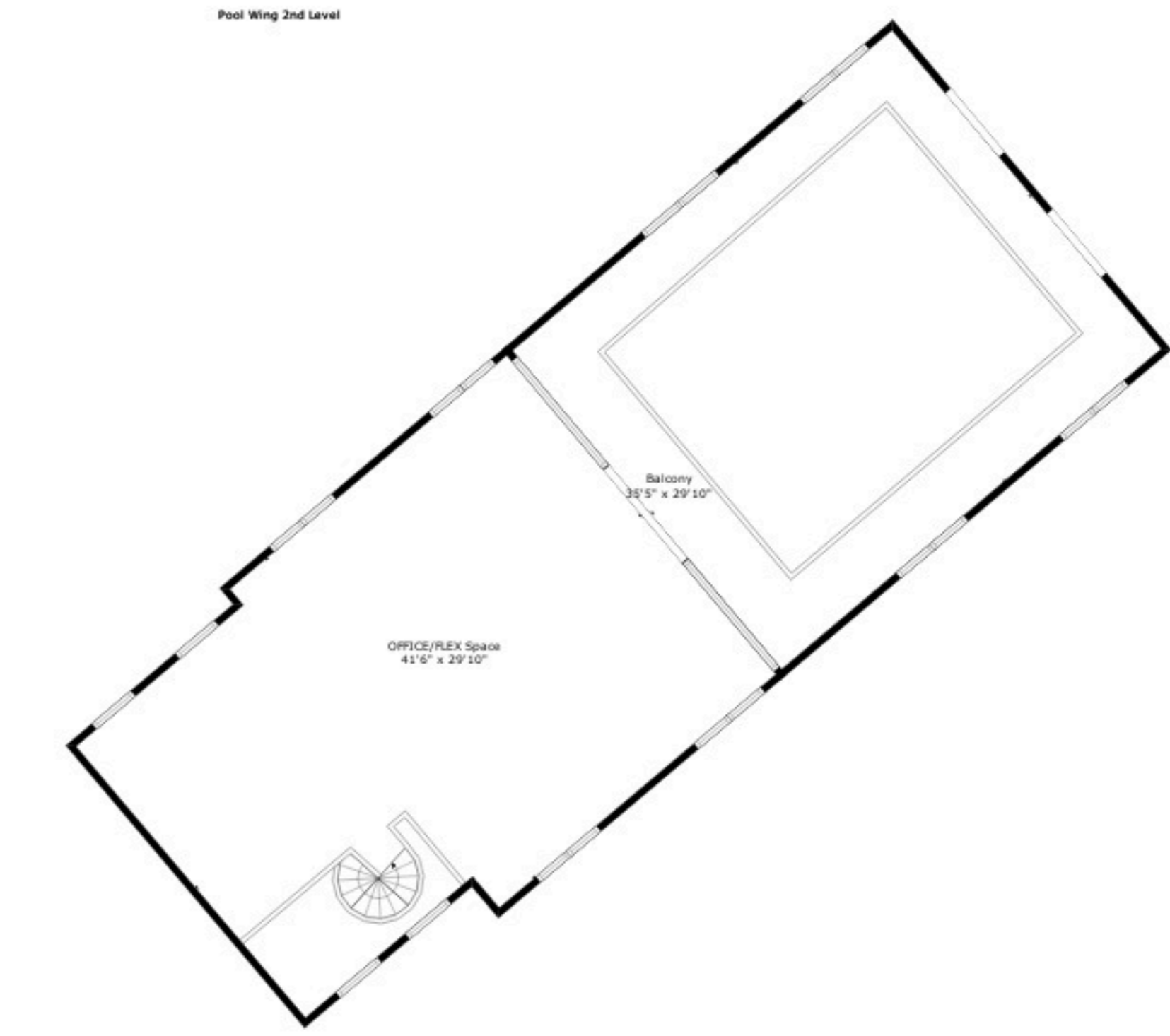
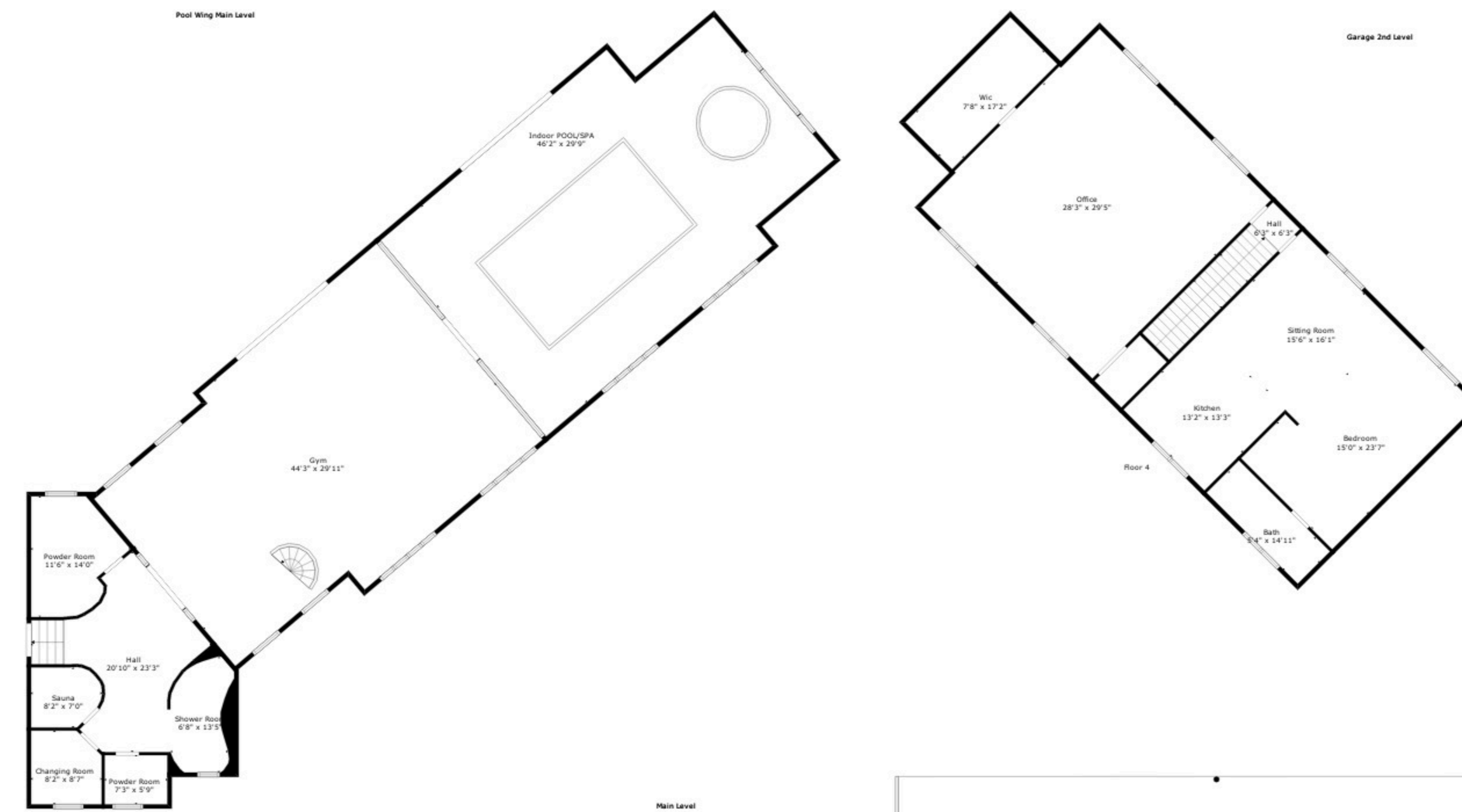
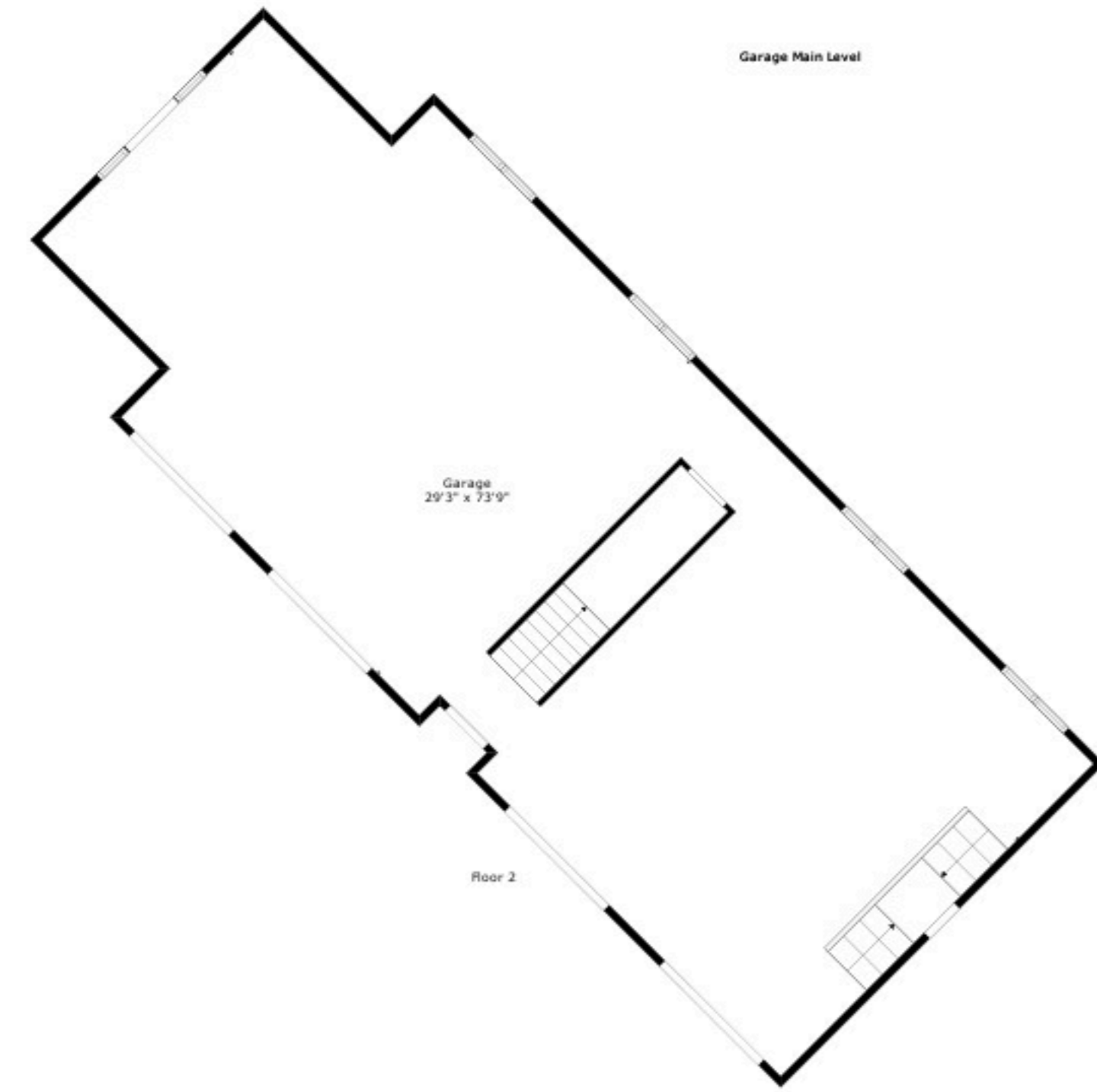
TOTAL: 19979 sq. ft

Below Ground: 4360 sq. ft, FLOOR 2: 1890 sq. ft, FLOOR 3: 5104 sq. ft, FLOOR 4: 3048 sq. ft, FLOOR 5: 5577 sq. ft
 EXCLUDED AREAS: ELEVATOR: 134 sq. ft, ELECTRICAL ROOM: 516 sq. ft, WINE CELLAR: 188 sq. ft,
 INDOOR POOL/SPA: 1280 sq. ft, GARAGE: 2033 sq. ft, PORCH: 230 sq. ft,
 PATIO: 1876 sq. ft, LOW CEILING: 68 sq. ft, BALCONY: 2400 sq. ft,
 OPEN TO BELOW: 343 sq. ft



TOTAL: 19979 sq. ft

Below Ground: 4360 sq. ft, FLOOR 2: 1890 sq. ft, FLOOR 3: 5104 sq. ft, FLOOR 4: 3048 sq. ft, FLOOR 5: 5577 sq. ft
 EXCLUDED AREAS: ELEVATOR: 134 sq. ft, ELECTRICAL ROOM: 516 sq. ft, WINE CELLAR: 188 sq. ft,
 INDOOR POOL/SPA: 1280 sq. ft, GARAGE: 2033 sq. ft, PORCH: 230 sq. ft,
 PATIO: 1876 sq. ft, LOW CEILING: 68 sq. ft, BALCONY: 2400 sq. ft,
 OPEN TO BELOW: 343 sq. ft



TOTAL: 19979 sq. ft

Below Ground: 4360 sq. ft, FLOOR 2: 1890 sq. ft, FLOOR 3: 5104 sq. ft, FLOOR 4: 3048 sq. ft, FLOOR 5: 5577 sq. ft
 EXCLUDED AREAS: ELEVATOR: 134 sq. ft, ELECTRICAL ROOM: 516 sq. ft, WINE CELLAR: 188 sq. ft,
 INDOOR POOL/SPA: 1280 sq. ft, GARAGE: 2033 sq. ft, PORCH: 230 sq. ft,
 PATIO: 1876 sq. ft, LOW CEILING: 68 sq. ft, BALCONY: 2400 sq. ft,
 OPEN TO BELOW: 343 sq. ft

Measurements Are Calculated By Cubicasa Technology. Deemed Highly Reliable But Not Guaranteed.